



Flygt 2670.181

Table of Contents

1 Introduction.....	2
1.1 Specially approved products.....	2
2 Product Description.....	3
2.1 Products included.....	3
2.2 The data plate.....	3
2.3 Product denomination.....	3
3 Spare Parts.....	5
3.1 Exploded view.....	5
3.2 List of parts.....	6

1 Introduction

Purpose of this manual

The purpose of this manual is to provide necessary information on spare parts and accessories order.

Disclaimer

Always use genuine Flygt parts. The use of other spare parts or accessories can invalidate any claims for warranty or compensation. Xylem does not take any responsibility for damages that are caused by the use of non-original parts. For more information, contact your local sales and service representative.

Data for ordering spare parts

The following information is needed for spare part orders:

- Serial number of the product
- Part number
- Quantity of bulk material, see * in tables

1.1 Specially approved products

Qualification of personnel

Only Xylem or Xylem-authorized service personnel may undertake repair work on Ex-approved products.

Dimensional accuracy inspection

Spare parts marked with (Ex) after the part number are subject to dimensional accuracy inspection.

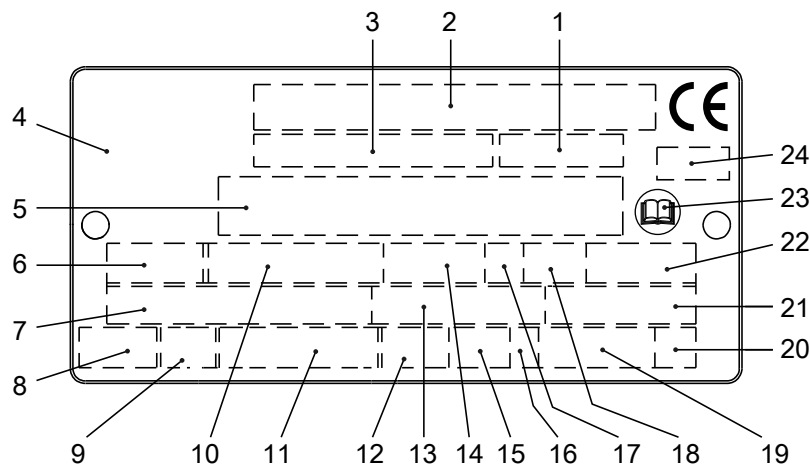
2 Product Description

2.1 Products included

Pump model	Standard	EX	MSHA	Drainage	Sludge
2670.181	X			X	

2.2 The data plate

The data plate is a metal label that is located on the main body of the products. The data plate lists key product specifications. Specially approved products also have an approval plate.



1. Curve code or Propeller code
2. Serial number
3. Product number
4. Country of origin
5. Additional information
6. Phase; type of current; frequency
7. Rated voltage
8. Thermal protection
9. Thermal class
10. Rated shaft power
11. International standard
12. Degree of protection
13. Rated current
14. Rated speed
15. Maximum submergence
16. Direction of rotation: L=left, R=right
17. Duty class
18. Duty factor
19. Product weight
20. Locked rotor code letter
21. Power factor
22. Maximum ambient temperature
23. Read installation manual
24. Notified body, only for EN-approved Ex products

Figure 1: The data plate

2.3 Product denomination

Reading instruction

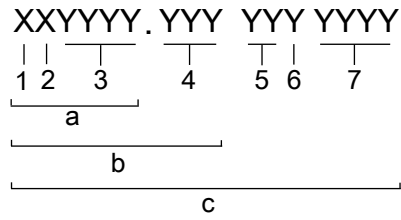
In this section, code characters are illustrated accordingly:

X = letter

Y = digit

The different types of codes are marked up with a, b and c. Code parameters are marked up with numbers.

Codes and parameters

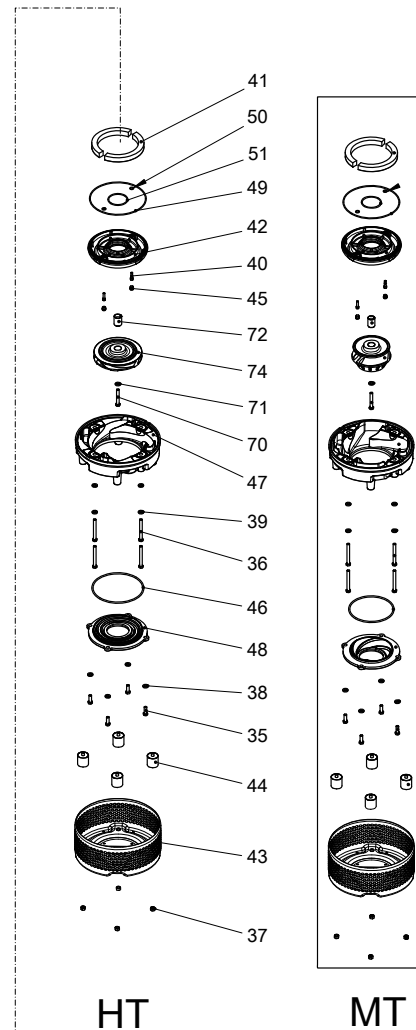
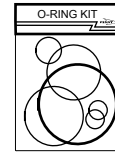
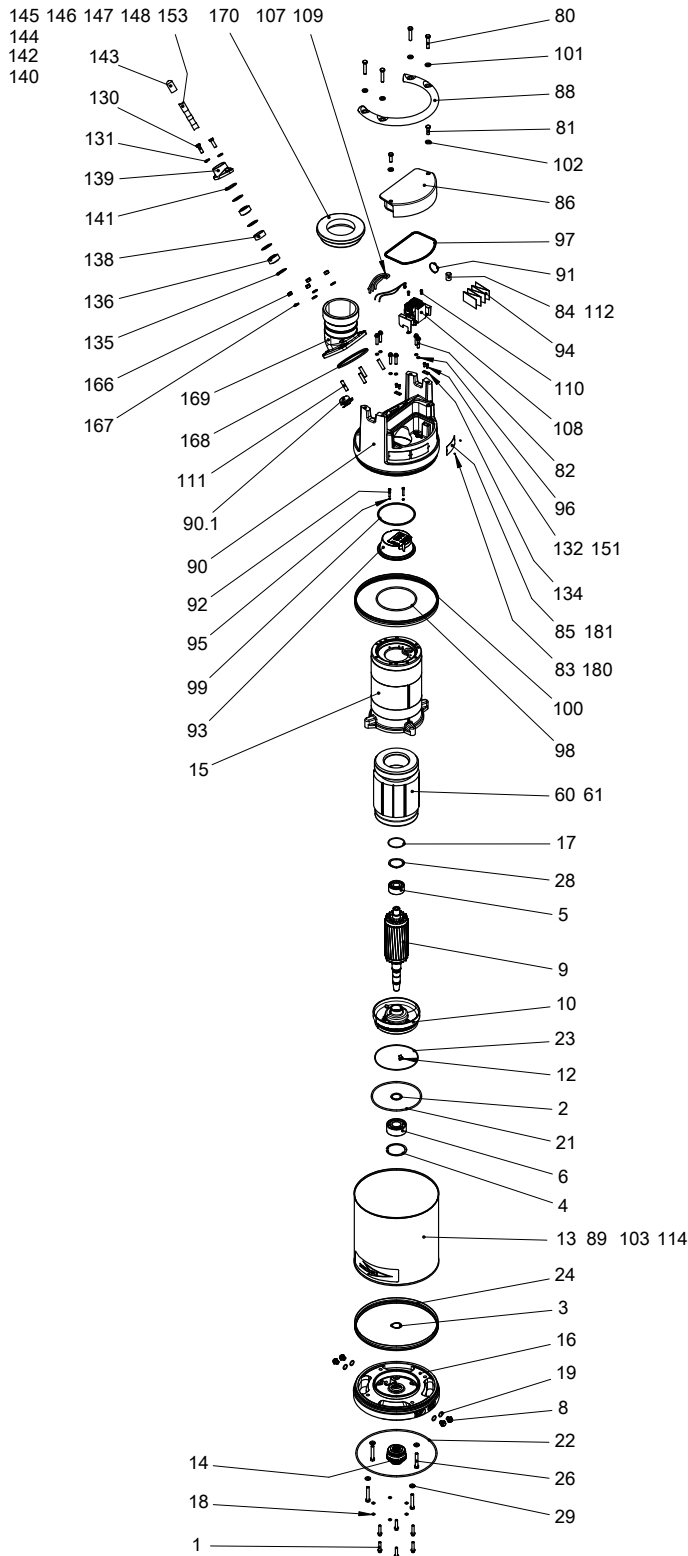


WS006265B

Type of Callout	Number	Indication
Type of code	a	Sales denomination
	b	Product code
	c	Serial number
Parameter	1	Hydraulic end
	2	Type of installation
	3	Sales code
	4	Version
	5	Production year
	6	Production cycle
	7	Running number

3 Spare Parts

3.1 Exploded view



20146B_expl_view_2670_181

3.2 List of parts

Pos. No	Part. No	Denomination	Qty/Version
			181
1	81 64 91	Hexagon flange screw M10X45-A2-70	6
2	82 44 15	Supporting washer 40X50X2.5	1
3	82 59 06	Retaining ring SGA 40	1
4	83 07 62	Retaining ring JB 90	1
5	83 30 16	Ball bearing 30X72X30.2 MM	1
6	83 30 18	Ball bearing 40X90X36.5 MM	1
7	90 17 52	Oil ISO VG 32	*
8	428 22 17	Inspection screw	4
9	641 91 03	Shaft unit	1
10	642 10 00	Bearing holder	1
12	665 29 00	Hexagon head screw	1
13	665 34 00	Cooling jacket	1
14	770 85 30	Mechanical seal	1
15	774 18 00	Stator housing	1
16	774 19 00	Adapter	1
17	82 71 72	O-ring 71.2X3 FPM	1
18	82 73 82	O-ring 10.3X2.4 NBR	6
19	82 72 95	O-ring 19.2X3 FPM	4
21	82 74 95	O-ring 219.3X5.7 NBR	1
22	82 75 06	O-ring 359.3X5.7 NBR	1
23	82 78 35	O-ring 175X3 NBR	1
24	708 20 00	Seal ring	1
26	81 41 63	Hexagon head screw M12X70-A2-70	4
28	82 56 25	Spring washer 71.5X59X0.55 MM	1
29	82 37 05	Plain washer 12-A2-170	4
35	81 41 56	Hexagon head screw M12X35-A2-70	4
36	81 41 68	Hexagon head screw M12X110-A2-70	4
37	82 23 35	Hexagon nut M12-A4-70	4
38	82 37 05	Plain washer 12-A2-170	4
39	82 37 05	Plain washer 12-A2-170	4
40	83 03 02	Hex.socket hd screw M8X30-A4-70	2
41	83 94 66	Pressure equalizer L=310 MM	2
42	665 32 00	Seal housing cov.coa	1
43	665 33 01	Strainer	1
44	665 35 00	Damper complete	4
45	710 30 00	Protective plug	2
46	82 74 91	O-ring 189.3X5.7 NBR	MT
46	82 74 95	O-ring 219.3X5.7 NBR	HT
47	665 26 00	Diffuser coat. NBR	MT
47	774 76 00	Diffuser coat. PU	MT
47	665 24 00	Diffuser coat. NBR	HT
47	774 77 00	Diffuser coat. PU	HT

Pos. No	Part. No	Denomination	Qty/Version	
			181	
48	665 30 00	Suction cover	MT B Material suction cover: Hard iron	1
48	665 28 00	Suction cover	HT B Material suction cover: Hard iron	1
48	739 68 00	Suction cover	HT B Material suction cover: Stainless steel	1
49	82 81 96	O-ring 246.0X4.0 FPM		1
50	82 79 11	O-ring 11.6X2.9 FPM		2
51	82 95 69	O-ring 84.4X4 FPM		1
60	661 39 08	Stator 21-18-2b	6-leads 3-phase 60 Hz 2-poles 200V-208V D	1
60	661 39 02	Stator 21-18-2b	6-leads 3-phase 50 Hz 2-poles 380V-400V Y 3-phase 60Hz 440V-480V Y 6-leads 3-phase 50 Hz 2-poles 220V-230V D 380V-400V Y 6-leads 3-phase 50 Hz 2-poles 220V-240V D	1
60	661 39 06	Stator 21-18-2b	6-leads 3-phase 60 Hz 2-poles 220V-240V D	1
60	661 39 04	Stator 21-18-2b	9-leads 3-phase 60 Hz 2-poles 220V-240V Y// 440V-480V YSER 9-leads 3-phase 60 Hz 2-poles 220V-240V Y// 9-leads 3-phase 60 Hz 2-poles 440V-480V YSER	1
60	661 39 07	Stator 21-18-2b	6-leads 3-phase 50 Hz 2-poles 660V-690V Y 6-leads 3-phase 50 Hz 2-poles 380V-400V D 6-leads 3-phase 60 Hz 2-poles 440V-480V D 6-leads 3-phase 50 Hz 2-poles 380V-400V D 660V-690V Y	1
60	661 39 12	Stator 21-18-2b	3-leads 3-phase 60 Hz 2-poles 460V Y	1
60	661 39 10	Stator 21-18-2b	6-leads 3-phase 60 Hz 2-poles 380V-400V D	1
60	661 39 11	Stator 21-18-2b	12-leads 3-phase 60 Hz 2-poles 440V-460V DSER 12-leads 3-phase 60 Hz 2-poles 440V-460V DSER 380V-400V Y// 12-leads 3-phase 60 Hz 2-poles 380V Y//	1
60	661 39 01	Stator 21-18-2b	6-leads 3-phase 50 Hz 2-poles 415V-440V D	1
60	661 39 03	Stator 21-18-2b	6-leads 3-phase 60 Hz 2-poles 1000V Y 6-leads 3-phase 50 Hz 2-poles 500V D 6-leads 3-phase 60 Hz 2-poles 575V-600V D	1
60	661 39 13	Stator 21-18-2b	3-leads 3-phase 60 Hz 2-poles 575V-600V Y	1

Pos. No	Part. No	Denomination	Qty/Version
			181
60	661 39 05	Stator 21-18-2b	1
		6-leads 3-phase 50 Hz 2-poles 525V-550V D	
		6-leads 3-phase 50 Hz 2-poles 1000V Y	
		6-leads 3-phase 50 Hz 2-poles 525V-550V D 1000V Y	
61	83 44 23	Closed-end splice 4.0-9.0 (AWG 8) L=28	1
		9-leads 3-phase 60 Hz 2-poles 220V-240V Y// 440V-480V YSER	
		12-leads 3-phase 60 Hz 2-poles 440V-460V DSER 380V-400V Y//	
		9-leads 3-phase 60 Hz 2-poles 220V-240V Y//	
		9-leads 3-phase 60 Hz 2-poles 440V-480V YSER	
61	83 44 23	Closed-end splice 4.0-9.0 (AWG 8) L=28	3
		9-leads 3-phase 60 Hz 2-poles 220V-240V Y// 440V-480V YSER	
		12-leads 3-phase 60 Hz 2-poles 440V-460V DSER 380V-400V Y//	
		9-leads 3-phase 60 Hz 2-poles 220V-240V Y//	
		9-leads 3-phase 60 Hz 2-poles 440V-480V YSER	
70	81 56 93	Hexagon head screw M12X80-A4-80	1
71	82 37 05	Plain washer 12-A2-170	1
72	720 14 00	Sleeve unit	1
	72,1 643 65 01	Sleeve	1
	72,2 643 66 00	Adjustment screw	1
74	665 37 00	Impeller	1
		226 B-impeller MT 50Hz 3-phase Maximum temperature 40 DC Material Hard-Iron TM	
74	665 37 02	Impeller	1
		228 B-impeller MT 60Hz 3-phase Maximum temperature 40 DC Material Hard-Iron TM	
74	665 37 01	Impeller	1
		230 B-impeller MT 50Hz 3-phase Maximum temperature 70 DC Material Hard-Iron TM	
74	665 37 03	Impeller	1
		232 B-impeller MT 60Hz 3-phase Maximum temperature 70 DC Material Hard-Iron TM	
74	665 36 00	Impeller	1
		251 B-impeller HT 50Hz 3-phase Maximum temperature 40 DC Material Hard-Iron TM	
74	665 36 02	Impeller	1
		253 B-impeller HT 60Hz 3-phase Maximum temperature 40 DC Material Hard-Iron TM	
74	665 36 01	Impeller	1
		255 B-impeller HT 50Hz 3-phase Maximum temperature 70 DC Material Hard-Iron TM	
74	665 36 03	Impeller	1
		257 B-impeller HT 60Hz 3-phase Maximum temperature 70 DC Material Hard-Iron TM	

Pos. No	Part. No	Denomination	Qty/Version
			181
74	739 64 00	Impeller 266 B-impeller HT 50Hz 3-phase Maximum temperature 40 DC Material Stainless steel, castings	1
74	739 64 02	Impeller 267 B-impeller HT 60Hz 3-phase Maximum temperature 40 DC Material Stainless steel, castings	1
74	739 64 01	Impeller 268 B-impeller HT 50Hz 3-phase Maximum temperature 70 DC Material Stainless steel, castings	1
74	739 64 03	Impeller 269 B-impeller HT 60Hz 3-phase Maximum temperature 70 DC Material Stainless steel, castings	1
80	81 41 47	Hexagon head screw M12X60-A2-70	4
81	81 41 56	Hexagon head screw M12X35-A2-70	2
82	81 64 91	Hexagon flange screw M10X45-A2-70	6
83	82 20 88	Drive screw 4X5-A2/A4	2
84	94 05 17	Insulating hose D=20 MM	*
85	630 68 00	Data plate USE 6306801 AS SPARE PART	1
86	665 20 00	Cover	1
88	715 07 00	Lifting handle	1
89	718 05 00	Sticker CUT HAZARD	1
90	734 64 01	Cover unit	1
91	83 45 52	Cable tie 292X3.5 MM	2
92	82 00 19	Hex.socket hd screw M6X35-A2-70	2
93	761 45 01	Terminal plate unit	1
94	773 50 03	Connection plate	1
95	81 78 97	O-ring 6.1X1.6 NBR	2
96	82 73 82	O-ring 10.3X2.4 NBR	6
97	82 74 93	O-ring 199.3X5.7 NBR	1
98	82 74 88	O-ring 174.3X5.7 NBR	1
99	82 74 85	O-ring 159.3X5.7 NBR	1
100	708 20 00	Seal ring	1
101	82 37 05	Plain washer 12-A2-170	4
102	82 37 05	Plain washer 12-A2-170	2
103	340 71 00	Instruction plate	1
107	573 58 53	Single-core cable	1
		Contactor unit	
		Terminal board	
107	573 58 68	Single-core cable	1
		Contactor unit	
		Soft	
		Terminal board	
107	573 58 63	Single-core cable	1
		Contactor unit	
107	573 58 69	Single-core cable	1
		Contactor unit	
108	693 79 02	Con.term.board unit	1
		Terminal board Max 1000V 50/60Hz 3-phase 0V - 1000V CSA approved Motor cable conductor size max: 35mm ²	

Pos. No	Part. No	Denomination	Qty/Version
			181
108	673 89 02	Contactor unit	1
		Contactor unit 50Hz 3-phase 220V - 240V Not CSA approved	
		Contactor unit 60Hz 3-phase 220V - 240V CSA approved	
108,1	673 87 00	Holder	1
108,5	83 99 69	Contactor	1
108,8	83 02 77	Hex.socket hd screw M6X20-A4-70	2
108,9	82 27 26	Lock nut M6-A4-70	2
108,15	573 58 03	Electric cable AWG 16;L=70MM CSA	1
108	673 89 19	Contactor unit	1
		Contactor unit 50Hz 3-phase 380V - 400V Not CSA approved	
		Contactor unit 50Hz 3-phase 415V - 440V Not CSA approved	
		Contactor unit 60Hz 3-phase 380V - 400V Not CSA approved	
		Contactor unit 50Hz 3-phase 500V - 500V Not CSA approved	
108,1	673 87 00	Holder	1
108,5	84 02 54	Contactor	1
108,8	81 99 86	Hex.socket hd screw M4X16-A2-70	2
108,9	82 26 69	Lock nut	2
108,15	573 58 03	Electric cable AWG 16;L=70MM CSA	1
108	718 73 28	Contactor unit	1
		Contactor unit 60Hz 3-phase 575V - 600V CSA approved	
		Contactor unit 50Hz 3-phase 525V - 550V Not CSA approved	
108,1	673 87 00	Holder	1
108,4	762 56 00	Motor protector	1
108,5	82 98 09	Contactor	1
108,6	81 99 86	Hex.socket hd screw M4X16-A2-70	2
108,7	82 26 69	Lock nut	2
108,8	81 99 86	Hex.socket hd screw M4X16-A2-70	2
108,9	82 26 69	Lock nut	2
108,17	573 58 62	Single-core cable	1
108	718 73 29	Contactor unit	1
		Contactor unit 60Hz 3-phase 440V - 480V CSA approved	
		Contactor unit 60Hz 3-phase 380V - 400V CSA approved	
108,1	673 87 00	Holder	1
108,4	762 56 00	Motor protector	1
108,5	84 02 54	Contactor	1
108,6	81 99 86	Hex.socket hd screw M4X16-A2-70	2
108,7	82 26 69	Lock nut	2
108,8	81 99 86	Hex.socket hd screw M4X16-A2-70	2
108,9	82 26 69	Lock nut	2
108,17	573 58 62	Single-core cable	1
109	761 62 02	Cable set	1

Pos. No	Part. No	Denomination	Qty/Version
			181
110	83 02 73	Hex.socket hd screw M6X12-A4-70	2
111	80 95 29	Stud M12X35-A2-70	4
112	94 05 86	Insulating hose D=12 MM	*
113	730 20 01	Softstarter COMPL. UNIT WITH HOLDER	1
114	752 47 00	Sticker SOFTSTARTER PH.SEQ. GUARD	1
130	81 41 56	Hexagon head screw M12X35-A2-70	2
131	82 37 05	Plain washer 12-A2-170	2
132	83 02 73	Hex.socket hd screw M6X12-A4-70	2
134	642 16 00	Earthing plate	1
134	642 16 00	Earthing plate	2
135	82 40 81	Plain washer (30)-32 MM	4
135	82 40 82	Plain washer (32)-34 MM	4
135	82 40 69	Plain washer (33)-35 MM	4
136	84 18 01	Seal sleeve (17)-20 MM	2
		Screened 6x2,5+2x1,5 18,10 - 19,90mm Max 1000V Y/D start possible	
		SUBCAB 4G2,5+2x1,5 17 - 18mm Max 750V	
		SUBCAB 4G6 18 - 19mm Max 750V	
		SUBCAB 10AWG/4 18 - 19,70mm Max 600V	
		SUBCAB S3x2,5+3x2,5/3+S(4x0,5) 18 - 20mm Max 1000V	
136	84 18 00	Seal sleeve (14)-17 MM	2
		SUBCAB 4G4 16 - 17mm Max 750V	
136	84 18 02	Seal sleeve (20)-23 MM	2
		SUBCAB 12AWG/7 20 - 22mm Max 600V	
		SUBCAB 4G4+2x1,5 20 - 22mm Max 750V	
		SUBCAB 10AWG/3-2-1-GC 20,30 - 22,30mm Max 600V	
		SUBCAB S3x6+3x6/3+S(4x0,5) 20 - 22mm Max 1000V	
136	84 18 03	Seal sleeve (23)-26 MM	2
		SUBCAB 4G10+S(2x0,5) 24 - 26mm Max 1000V	
		SUBCAB 7G6+S(2x0,5) 24 - 26mm Max 1000V Y/D start possible	
		SUBCAB 7G4+2x1,5 24 - 26mm Max 750V Y/D start possible	
		SUBCAB 4G6+2x1,5 24 - 26mm Max 750V	
		SUBCAB S3x10+3x10/3+S(4x0,5) 24 - 26mm Max 1000V	
136	84 18 04	Seal sleeve (26)-29 MM	2
		SUBCAB 8AWG/3-2-1-GC 27,20 - 29,20mm Max 600V	
		SUBCAB 4G16+S(2x0,5) 26 - 28mm Max 1000V	
136	84 18 06	Seal sleeve (32)-35 MM	2
		SUBCAB 4AWG/3-2-1-GC 32,80 - 34,80mm Max 600V	
138	597 98 02	Sleeve	1
139	642 17 04	Entrance flange	1

Pos. No	Part. No	Denomination	Qty/Version	
			181	
140	94 20 59	Motor cable subcab	Power cable x 1 SUBCAB 4G2,5+2x1,5 17 - 18mm L= 20m Max 750V	*
140	94 20 43	Motor cable subcab	Power cable x 1 SUBCAB 4G4 16 - 17mm L= 20m Max 750V	*
140	94 20 60	Motor cable subcab	Power cable x 1 SUBCAB 4G4+2x1,5 20 - 22mm L= 20m Max 750V	*
140	94 20 80	Motor cable subcab	Power cable x 1 SUBCAB 7G4+2x1,5 24 - 26mm L= 20m Max 750V Y/D start possible	*
140	94 20 44	Motor cable subcab	Power cable x 1 SUBCAB 4G6 18 - 19mm L= 20m Max 750V	*
140	94 20 56	Motor cable subcab	Power cable x 1 SUBCAB 4G6+2x1,5 24 - 26mm L= 20m Max 750V	*
140	94 19 80	Motor cable subcab	Power cable x 1 SUBCAB 7G6+S(2x0,5) 24 - 26mm L= 20m Max 1000V Y/D start possible	*
140	94 19 81	Motor cable subcab	Power cable x 1 SUBCAB 4G10+S(2x0,5) 24 - 26mm L= 20m Max 1000V	*
140	94 19 82	Motor cable subcab	Power cable x 1 SUBCAB 4G16+S(2x0,5) 26 - 28mm L= 20m Max 1000V	*
140	94 21 04	Motor cable subcab	Power cable x 1 SUBCAB 12AWG/7 20 - 22mm L= 16m Max 600V	*
140	94 21 05	Motor cable subcab	Power cable x 1 SUBCAB 10AWG/4 18 - 19,70mm L= 16m Max 600V	*
140	94 21 06	Motor cable	Power cable x 1 SUBCAB 10AWG/3-2-1- GC 20,30 - 22,30mm L= 16m Max 600V	*
140	94 21 08	Motor cable	Power cable x 1 SUBCAB 8AWG/3-2-1- GC 27,20 - 29,20mm L= 16m Max 600V	*
140	94 21 10	Motor cable	Power cable x 1 SUBCAB 4AWG/3-2-1- GC 32,80 - 34,80mm L= 16m Max 600V	*
140	94 17 24	Motor cable	Power cable x 1 Screened 6x2,5+2x1,5 18,10 - 19,90mm L= 20m Max 1000V Y/D start possible	*
140	94 19 90	Motor cable subcab	Power cable x 1 SUBCAB S3x2,5+3x2,5/3+S(4x0,5) 18 - 20mm L= 20m Max 1000V	*
140	94 19 91	Motor cable subcab	Power cable x 1 SUBCAB S3x6+3x6/3+S(4x0,5) 20 - 22mm L= 20m Max 1000V	*
140	94 19 92	Motor cable subcab	Power cable x 1 SUBCAB S3x10+3x10/3+S(4x0,5) 24 - 26mm L= 20m Max 1000V	*
141	82 74 63	O-ring 49.5X3 NBR		1
142	82 70 86	Cap 6X16 PVC	SUBCAB 4G10+S(2x0,5) 24 - 26mm Max 1000V SUBCAB 4G16+S(2x0,5) 26 - 28mm Max 1000V SUBCAB 7G6+S(2x0,5) 24 - 26mm Max 1000V Y/D start possible	1

Pos. No	Part. No	Denomination	Qty/Version	
			181	
142	82 70 85	Cap 5X10 MM PVC	SUBCAB S3x2,5+3x2,5/3+S(4x0,5) 18 - 20mm Max 1000V SUBCAB S3x6+3x6/3+S(4x0,5) 20 - 22mm Max 1000V	1
142	82 70 87	Cap 7X16 PVC	SUBCAB S3x10+3x10/3+S(4x0,5) 24 - 26mm Max 1000V	1
143	82 97 75	Cap 25X45 MM PVC	SUBCAB 7G6+S(2x0,5) 24 - 26mm Max 1000V Y/D start possible	1
143	82 97 74	Cap 24X45 MM PVC	SUBCAB 4G10+S(2x0,5) 24 - 26mm Max 1000V	1
143	82 97 76	Cap 26X45 MM PVC	SUBCAB 4G16+S(2x0,5) 26 - 28mm Max 1000V	1
143	82 97 68	Cap 18X25 MM PVC	SUBCAB S3x2,5+3x2,5/3+S(4x0,5) 18 - 20mm Max 1000V	1
143	82 97 71	Cap 21X45 MM PVC	SUBCAB S3x6+3x6/3+S(4x0,5) 20 - 22mm Max 1000V	1
143	82 97 73	Cap 23X45 MM PVC	SUBCAB S3x10+3x10/3+S(4x0,5) 24 - 26mm Max 1000V	1
144	83 42 36	End sleeve 0.75 MM ² ; L=6 MM	SUBCAB 4G10+S(2x0,5) 24 - 26mm L= 20m Max 1000V SUBCAB 4G16+S(2x0,5) 26 - 28mm L= 20m Max 1000V SUBCAB 7G6+S(2x0,5) 24 - 26mm L= 20m Max 1000V Y/D start possible SUBCAB S3x2,5+3x2,5/3+S(4x0,5) 18 - 20mm L= 20m Max 1000V SUBCAB S3x10+3x10/3+S(4x0,5) 24 - 26mm L= 20m Max 1000V SUBCAB S3x6+3x6/3+S(4x0,5) 20 - 22mm L= 20m Max 1000V	2
144	83 42 29	End sleeve 4 MM ² ; L=10 MM	SUBCAB 4AWG/3-2-1-GC 32,80 - 34,80mm L= 16m Max 600V	3
144	83 42 34	End sleeve 25 MM ² ; L=15 MM	SUBCAB 4AWG/3-2-1-GC 32,80 - 34,80mm L= 16m Max 600V	3
144	83 42 35	End sleeve 10 MM ² ; L=12 MM	SUBCAB 4AWG/3-2-1-GC 32,80 - 34,80mm L= 16m Max 600V	1
145	83 42 62	Closed-end splice 0.33-0.82(AWG 22-18) L=18		2
145	83 44 24	Closed-end splice 3-6(AWG 12-10) L=18		1
146	83 43 62	Cable lug UL/CSA 0.5-1.65 MM ²		1
147	94 03 30	Shrink hose ID=12 MM		*
148	94 03 33	Shrink hose ID=3.2 MM		*
148	94 03 34	Shrink hose		*
151	83 02 77	Hex.socket hd screw M6X20-A4-70		2
151	83 02 73	Hex.socket hd screw M6X12-A4-70		2
153	93 00 77	Shrink hose ID=6.4 MM		*
153	93 00 78	Shrink hose ID=9.5 MM		*
154	84 06 61	Plug contact		1
166	82 23 35	Hexagon nut M12-A4-70		4
167	82 37 05	Plain washer 12-A2-170		4

Pos. No	Part. No	Denomination	Qty/Version	
			181	
168	275 17 00	U-ring	1	
169	665 15 00	Discharge connection	DN 100 Hose aluminium	1
169	665 15 01	Discharge connection	DN 100 Thread: ISO G4A Outer Quick coupling: Storz aluminium	1
			DN 100 Thread: ISO G4A Outer aluminium	
			DN 100 Thread: ISO G4A Outer Quick coupling: Storz diam=115 mm aluminium	
169	665 15 04	Discharge connection	DN 100 Thread: Victaulic groove Outer aluminium	1
169	665 15 03	Discharge connection	DN 100 Thread: NPT 4-8 Outer aluminium	1
169	665 16 00	Discharge connection	DN 150 Hose aluminium	1
169	665 16 01	Discharge connection	DN 150 Thread: ISO G6A Outer aluminium	1
			DN 150 Thread: ISO G6A Outer Quick coupling: Storz aluminium	
169	665 16 04	Discharge connection	DN 150 Thread: Victaulic groove Outer aluminium	1
169	665 16 03	Discharge connection	DN 150 Thread: NPT 6-8 Outer aluminium	1
170	83 19 34	Coupling part	Discharge Connection DN 100 Thread: ISO G4A Outer Quick coupling: Storz aluminium	1
170	83 19 33	Coupling part	Discharge Connection DN 100 Thread: ISO G4A Outer Quick coupling: Storz diam=115 mm aluminium	1
170	83 19 36	Coupling part	Discharge Connection DN 150 Thread: ISO G6A Outer Quick coupling: Storz aluminium	1
180	82 20 88	Drive screw 4X5-A2/A4		2
181	630 76 00	Plate HOT WATER PRODUCT		1
800	782 43 00	O-ring kit	FPM	1
801	673 93 00	Anode unit		1
802	608 23 02	Stand		1
815	554 30 19	Starter	351 3-phase 50 Hz 380V - 415 V Current range: 24 - 32 A Overload supervision Phase sequence indicator Supply connection CEE 5-PLUG 32A Cable gland diameter: 18 - 25 mm Not CSA approved	1
815	554 30 49	Starter	351 3-phase 50 Hz 380V - 415 V Current range: 24 - 32 A Overload supervision Phase sequence indicator Supply connection on terminal Cable gland diameter: 18 - 25 mm Not CSA approved	1
815	554 30 59	Starter	351 3-phase 50 Hz 440V - 500 V Current range: 24 - 32 A Overload supervision Phase sequence indicator Supply connection on terminal Cable gland diameter: 18 - 25 mm Not CSA approved	1

Pos. No	Part. No	Denomination	Qty/Version
			181
815	554 20 09	Starter	1
		356 3-phase 60 Hz 440V - 480 V Current range: 24 - 32 A Overload supervision Supply connection on terminal Cable gland diameter: 13 - 25 mm CSA approved	
		356 3-phase 50/60 Hz 380V - 415 V Current range: 24 - 32 A Overload supervision Supply connection on terminal Cable gland diameter: 13 - 25 mm CSA approved	
815	554 20 08	Starter	1
		356 3-phase 60 Hz 575V - 600 V Current range: 20 - 25 A Overload supervision Supply connection on terminal Cable gland diameter: 13 - 25 mm CSA approved	
815	554 21 09	Starter	1
		356 3-phase 50/60 Hz 380V - 415 V Current range: 24 - 32 A Overload supervision Supply connection on terminal Cable gland diameter: 13 - 25 mm CSA approved	
		356 3-phase 60 Hz 440V - 480 V Current range: 24 - 32 A Overload supervision Supply connection on terminal Cable gland diameter: 13 - 25 mm CSA approved	
815	554 21 08	Starter	1
		356 3-phase 60 Hz 575V - 600 V Current range: 20 - 25 A Overload supervision Supply connection on terminal Cable gland diameter: 13 - 25 mm CSA approved	
816	736 69 00	Wear part kit MT 50HZ	1
816	736 69 01	Wear part kit MT 60HZ	1
816	736 69 02	Wear part kit HT 50HZ	1
816	736 69 03	Wear part kit HT 60HZ	1
817	736 70 00	Hydraulic repair kit MT	1
817	736 70 01	Hydraulic repair kit HT	1
817	736 70 02	Hydraulic repair kit MT (PU)	1
817	736 70 03	Hydraulic repair kit HT (PU)	1
900	782 81 03	Basic repair kit	1
		FPM PLUGIN 35MM, ACTIVE WCCR/WCCR;WCCR/A1203	
900,1	83 30 16	Ball bearing 30X72X30.2 MM	1
900,2	83 30 18	Ball bearing 40X90X36.5 MM	1
900,3	83 94 66	Pressure equalizer L=310 MM	2
900,4	730 83 00	Sticker	1
900,5	770 85 30	Mechanical seal	1
900,6	782 43 00	O-ring kit	1



ООО «Бауманс Груп» - официальный партнер фирмы Flygt в России.

Тел: +7 495 121 49 50

Эл. почта: info@baumgroup.ru

Сайт: www.baumgroup.ru